

I Have, Who Has Directions

Fall/Halloween



1. Print and cut out the cards.
2. Give one card to each student. If you have less than 24 students, give a few students more than one or include yourself. Give students time to figure out the pictures on their cards.
3. The student with the first card reads the card out loud.
4. Students listen for the first word/picture on their card. When they hear the first word/picture, they read their own card out loud.
5. Play continues until the last card, which says, "The end."
6. Students can switch cards with friends and play again.

Correct Order of the Cards



- | | | |
|---------------|---------------|--------------|
| 1. first card | 9. mummy | 17. broom |
| 2. cat | 10. bat | 18. monster |
| 3. skeleton | 11. slime | 19. leaf |
| 4. hat | 12. moon | 20. pirate |
| 5. scarecrow | 13. ghost | 21. bag |
| 6. web | 14. sucker | 22. pumpkin |
| 7. candy corn | 15. spider | 23. house |
| 8. a pot | 16. superhero | 24. dinosaur |

CCSS SL.1.1 Follow agreed-upon rules for discussions (e.g., listening to others with care, speaking one at a time about the topics and texts under discussion).

I have
the first card.



Who has cat?



I have cat.



Who has skeleton?



I have skeleton.



Who has hat?



I have hat.



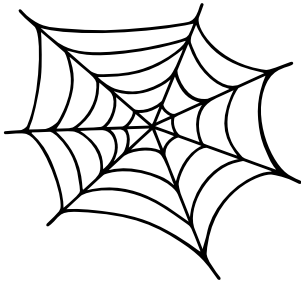
Who has scarecrow?



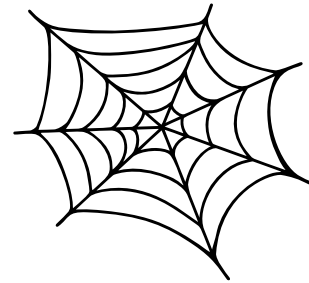
I have scarecrow.



Who has web?



I have web.



Who has candy corn?



I have candy corn.



Who has a pot?



I have a pot.



Who has mummy?



I have mummy.



Who has bat?



I have bat.



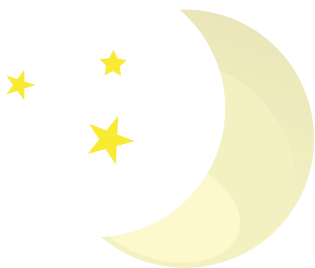
Who has slime?



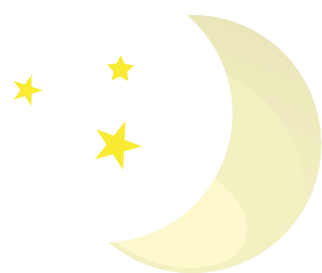
I have slime.



Who has moon?



I have moon.



Who has ghost?



I have ghost.



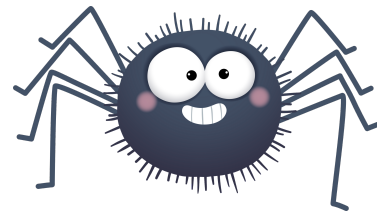
Who has sucker?



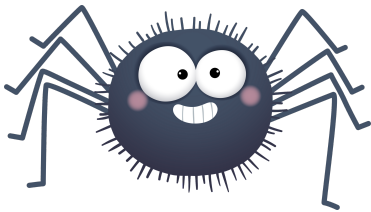
I have sucker.



Who has spider?



I have spider.



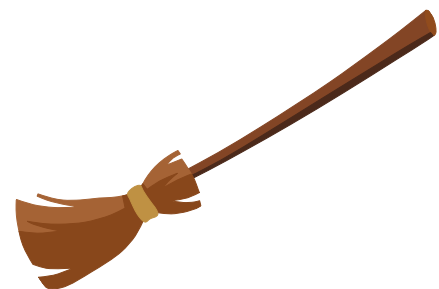
Who has superhero?



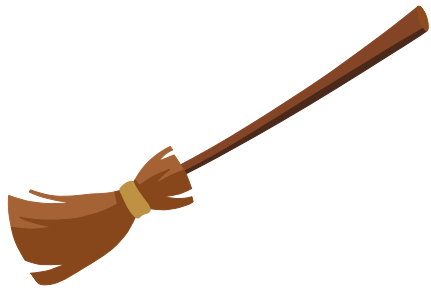
I have superhero.



Who has broom?



I have broom.



Who has monster?



I have monster.



Who has leaf?



I have leaf.



Who has pirate?



I have pirate.



Who has bag?



I have bag.



Who has pumpkin?



I have pumpkin.



Who has house?



I have house.



I have dinosaur.



Who has dinosaur?



The end.